



# FTS



## FACILITIES TECHNICAL SERVICES

### COMPANY PROFILE

Automated Roof Sloped Mounted Smoke Ventilators

Automated Cold-room Hatches | Powered Smoke Extract Systems

Façade Automation | Basement Ventilation | Automated Fire & Smoke Curtains



# **SPECIALIST IN SMOKE VENTILATION AND FIRE PROTECTION**

**Established in 2016, FTS helps people feel healthy, safe, and comfortable in their living and working environments. Through our natural ventilation and smoke control systems, clients enjoy optimum air quality, comfortable temperatures, and improved productivity.**

**In the event of a fire, count on FTS for smoke-free escape routes, safe evacuation, and clear access for effective fire-fighting. It is our goal to be the first point of contact whenever the need for life safety systems arises.**

---

We offer systems that comply with the relevant parts of EN12101, as required by SANS 10400. With extensive knowledge and experience, we design, install, and maintain systems tailored to our client's specific requirements.

Our mission is to lead the smoke and natural ventilation industry by offering superior service and products that exceed current industry standards. We focus on delivering projects efficiently with an uncompromising quality of installation.

Our dedicated team is headed by owner Dyllan Seller, who is committed to the continuous development and expansion of the services and products we provide to our clients.



**FTS**

# Products

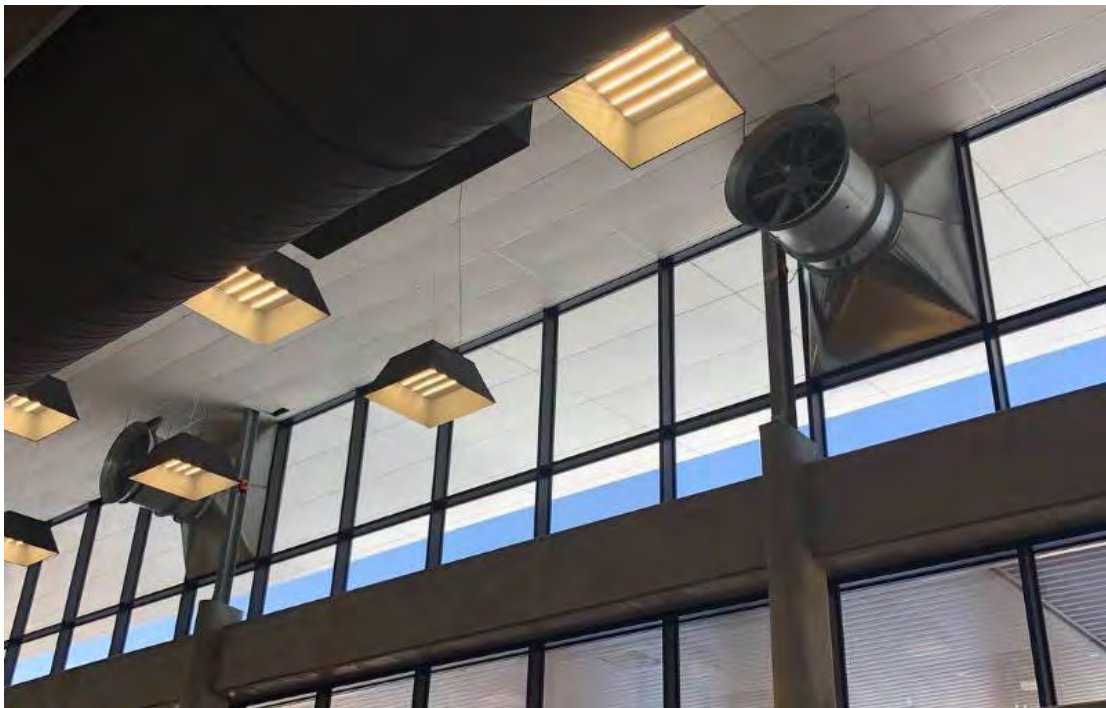


## Smoke Extraction

FTS smoke control systems are designed for life safety. To contain and remove dangerous smoke, allowing safe evacuation and fire-fighting with minimal damage to property

*Our range of systems include:*

- Fire rated powered smoke extract fans and duct work
  - Fire rated dampers
  - Roof smoke ventilators
- 

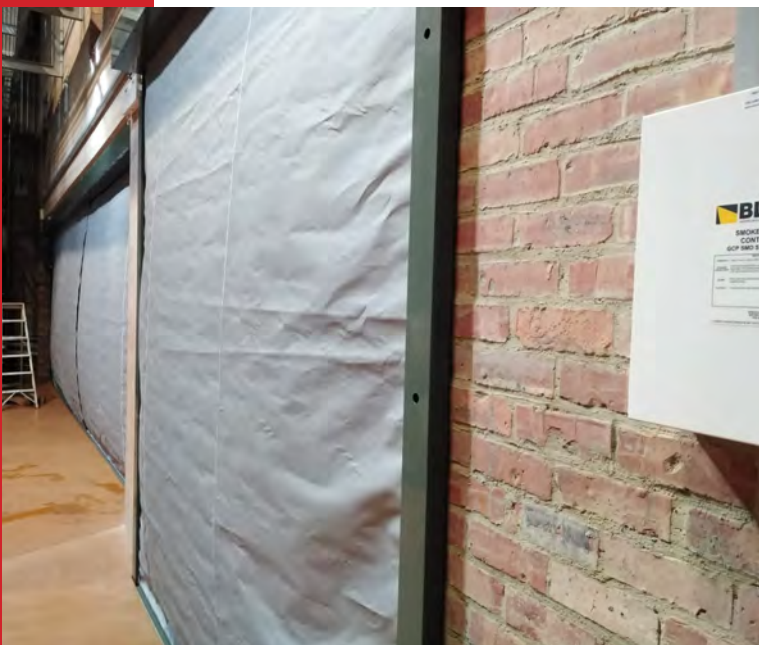


## Smoke and Fire Containment

At FTS, we are continually striving to improve building safety. In the event of a fire, our gravity fail-safe curtains automatically deploy to contain smoke and fire. This limits the speed of spread across a building, crucially allowing more time for safe emergency evacuation.

*Our range of systems include:*

- Automated fire and smoke curtains
- Static smoke barriers to contain smoke reservoirs for exhaust



## Facade Automation

We believe that safety systems should complement the architectural design of a building. Life safety and ventilation are integral to constructing healthier environments. FTS provides a range of façade, skylight, and door automation products that provide smoke and natural ventilation suited to your specific architectural requirements.

*Our range of systems include:*

- Automated facades
- Automated skylights
- Automated doors
- Wind, rain and CO<sub>2</sub> sensors
- BMS (Building Management System) integration

# Products

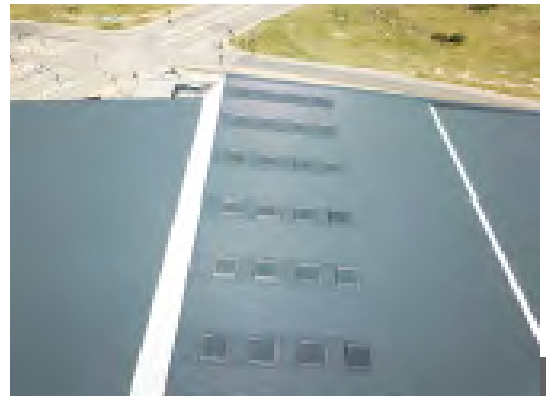
## RVI Orion

RVI has always been a solutions-led company and is well-positioned at the forefront of industrial progression. The company is therefore continually involved in finding effective solutions to smoke control problems.

Our natural smoke and heat exhaust ventilation systems are designed to extract smoke from the interior of a building through automatically operable roof-mounted ventilators, in compliance with Part 2 of the EN 1210 I code. RVI also installs powered smoke and heat exhaust systems to enhance ventilation. These systems not only ensure that fans and cabling comply with the relevant part of the EN 1210 I code, but also ensures the company's research and development objectives are on par with the latest international developments.

### Features

- Natural day-to-day ventilation
- Natural smoke exhaust in case of fire
- No fan power consumption required
- Compliance with the EN 12101-2
- CE certified, for all the options



The Orion is a multifunctional roof ventilator with certified aerodynamic area as a standalone ventilator with the certification extending when incorporating bird screens, burglar bars and wind baffles in any combination. The added advantage of the Orion is its compliance with EN 12101-2 and CE mark, allowing the designer complete peace of mind when specifying this product.

#### **Specifications:**

*All options of the Orion are certified*

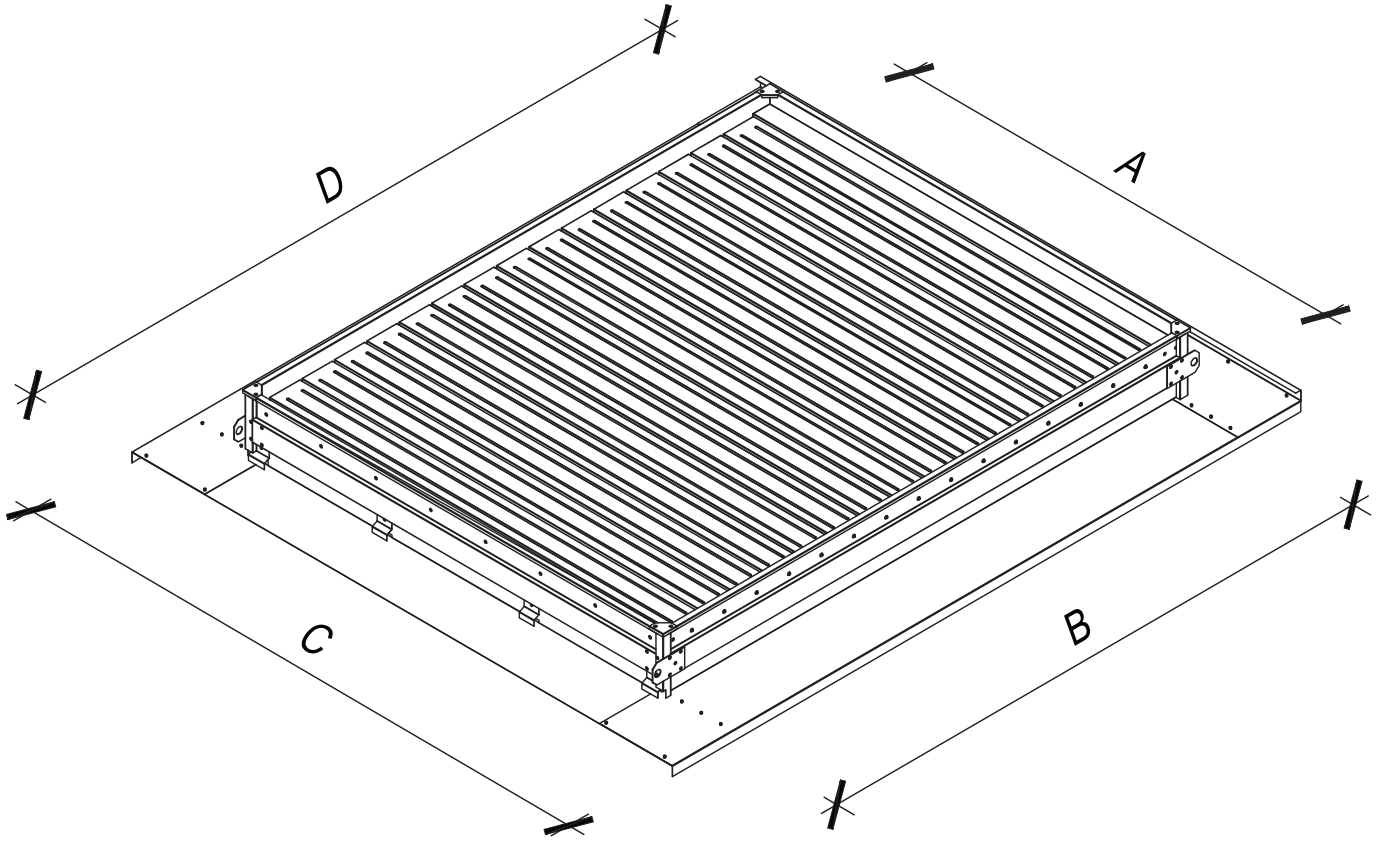
- Material: ZincAlume or Galvanised
- Standard Chromadek®, Standard COLORPLUS®, standard RAL colours available
- Installation angle: Flat roof up to 15° inclination or monitor of 45°
- Opening mechanism: 24V linear actuator or 24V spring return actuator
- Fusible link temperatures: 74°C, 100°C, 138°C, 182°C or 232°C
- Up-stand of 150 mm possible
- Wind deflector of 50 mm height possible
- Extended width possible
- Optional: bird mesh, burglar bar

#### **Performances and Classification**

*Certified by an independent test laboratory, according to EN 12101-2 standard*

- Aerodynamic free area: see table on the following page
- Reliability: Re100
- Low ambient temperature: T(00)
- Wind load: WL 2300
- Resistance to heat: B 300
- Reaction to fire classification (steel): A1

# Products



<b>ORION</b>	<b>A10</b>	<b>A12</b>	<b>A14</b>	<b>A15</b>
Measured Throat Area ( $A_v$ ) in $m^2$	1,83	2,18	2,53	2,7
Discharge Coefficient ( $C_vO$ )	0,59	0,59	0,58	0,57
Throat Width & Length in mm(B & A)	1316 x 1394	1316 x 1660	1316 x 1926	1316 x 2059
Total Width & Length in mm (D & C)	1916 x 1794	1916 x 2060	1916 x 2326	1916 x 2459
Total Height in mm	0,15	0,15	0,15	0,15
Quantity of Blades	10	12	14	15
Recommended Purlin Spacing in mm	1400	1600	1900	2000
Mass in kg	49	60	68	73

<b>ORiON</b>	<b>B10</b>	<b>B12</b>	<b>B14</b>	<b>B15</b>
Measured Throat Area (Av) in m <sup>2</sup>	2,26	2,68	3,11	3,32
Discharge Coefficient (CvO)	0,60	0,60	0,56	0,55
Throat Width & Length in mm(B & A)	1616 x 1394	1616 x 1660	1616 x 1926	1616 x 2059
Total Width & Length in mm (D & C)	2216 x 1794	2216 x 2060	2216 x 2326	2216 x 2459
Total Height in mm	0,15	0,15	0,15	0,15
Quantity of Blades	10	12	14	15
Recommended Purlin Spacing in mm	1400	1600	1900	2000
Mass in kg	61	72	84	90

# Projects



## The Ridge Deloitte V&A Waterfront

### *Systems Installed:*

- Fifty (50) automated façade windows
- Forty-two (42) automated skylights
- Twelve (12) automated doors
- Sixteen (16) automated roof smoke ventilators





## Babylonstoren Winery

### *Systems Installed:*

- Four (4) automated fire curtains
  - One (1) fire rated roller shutter
- 

## Parklands college

### *Systems Installed:*

- Eighty six (86) façade automated windows
  - Wind/Rain and CO2 sensors
- 



## Groote Schuur Neuroscience

### *Systems Installed:*

- Twenty-eight (28) automated skylights
  - Twenty (20) Fire rated automated curtains
- 

## Brights Hardware Brackengate

### *Systems Installed:*

- Six (6) smoke fans
  - Six (6) vertical automated discharge louver ventilators
  - Eight (8) vertical automated make up air ventilators
  - Forty-two meters (42m) Ridge ventilator
- 



# FTS

*Whilst we are experts in handling  
smoke signals, there is an easier way  
to get in touch.*

**Director**

Dyllan Seller

082 496 0863

dyllan@FTSsmoke.com

**Contracts Manager**

Omar Gabier

065 838 9259

omar@ftssmoke.com

**Service and Maintenance  
Director**

Fagan Hazell

076 729 7648

fagan@FTSfire.co.za

[www.FTSsmoke.co.za](http://www.FTSsmoke.co.za)

# RVI

## ORION: Multifunctional Roof Ventilator



Visit: [www.rvi-group.com](http://www.rvi-group.com)  
Email: [marketing@rvi-group.com](mailto:marketing@rvi-group.com)  
Tel: 011 047 8280

RVI Orion

 **helm**  
MANUFACTURING INGENUITY

# RVI Orion

RVI has always been a solutions-led company and is well-positioned at the forefront of industrial progression. The company is therefore continually involved in finding effective solutions to smoke control problems.

Our natural smoke and heat exhaust ventilation systems are designed to extract smoke from the interior of a building through automatically operable roof-mounted ventilators, in compliance with Part 2 of the EN 1210 I code. RVI also installs powered smoke and heat exhaust systems to enhance ventilation. These systems not only ensure that fans and cabling comply with the relevant part of the EN 1210 I code, but also ensures the company's research and development objectives are on par with the latest international developments.

## Features

- Natural day-to-day ventilation
- Natural smoke exhaust in case of fire
- No fan power consumption required
- Compliance with the EN 12101-2
- CE certified, for all the options

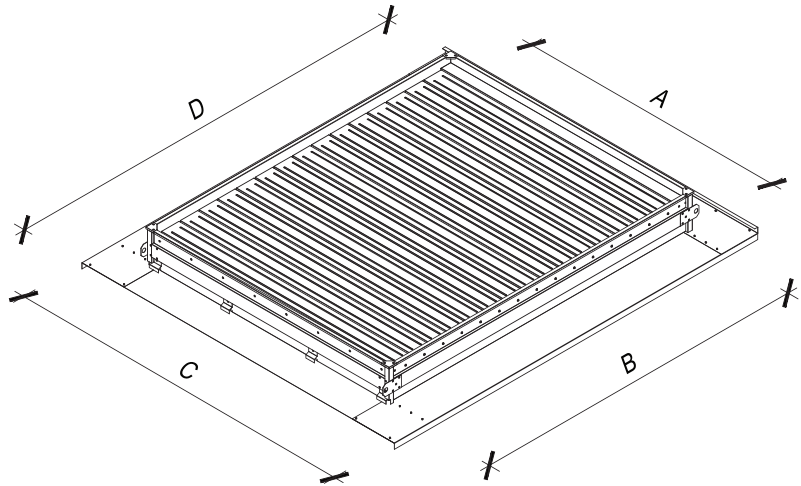
## Specifications

All options of the Orion are certified

- Material: ZincAlume or Galvanised
- Standard Chromadek®, Standard COLORPLUS®, standard RAL colours available
- Installation angle: Flat roof up to 15° inclination or monitor of 45°
- Opening mechanism: 24V linear actuator or 24V spring return actuator
- Fusible link temperatures: 74°C, 100°C, 138°C, 182°C or 232°C
- Up-stand of 150 mm possible
- Wind deflector of 50 mm height possible
- Extended width possible
- Optional: bird mesh, burglar bar

## Performances and Classification

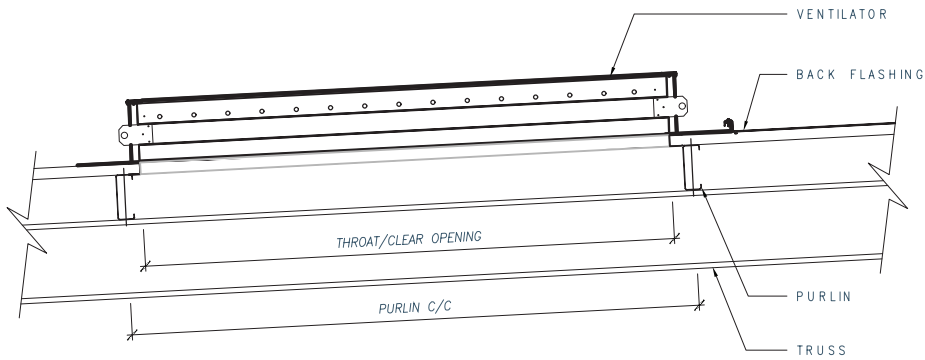
Certified by an independent test laboratory, according to EN 12101-2 standard



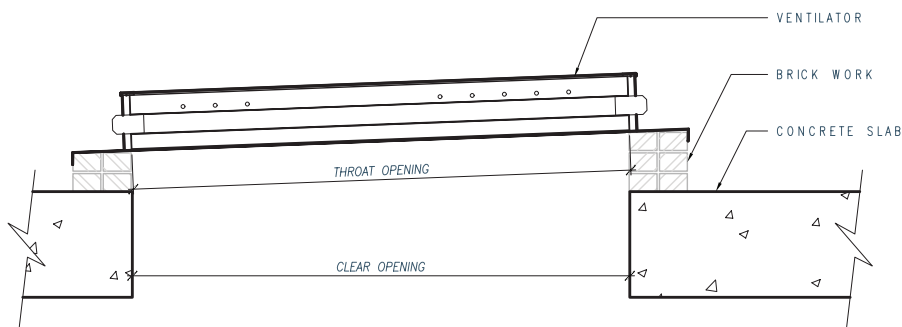
ORION	A10	A12	A14	A15	B10	B12	B14	B15
Measured Throat Area (Av) in m <sup>2</sup>	1,83	2,18	2,53	2,7	2,25	2,68	3,11	3,32
Discharge Coefficient (CvO)	0,59	0,59	0,58	0,57	0,60	0,60	0,56	0,55
Throat Width & Length in mm(B & A)	1316 x 1394	1316 x 1660	1316 x 1926	1316 x 2059	1616 x 1394	1616 x 1660	1616 x 1926	1616 x 2059
Total Width & Length in mm (D & C)	1916 x 1794	1916 x 2060	1916 x 2326	1916 x 2459	2216 x 1794	2216 x 2060	2216 x 2326	2216 x 2459
Total Height in mm	0,150	0,150	0,150	0,150	0,150	0,150	0,150	0,150
Quantity of Blades	10	12	14	15	10	12	14	15
Recommended Purlin Spacing in mm	1400	1600	1900	2000	1400	1600	1900	2000
Mass in kg	49	60	68	73	61	72	84	90



Typical roof installation detail

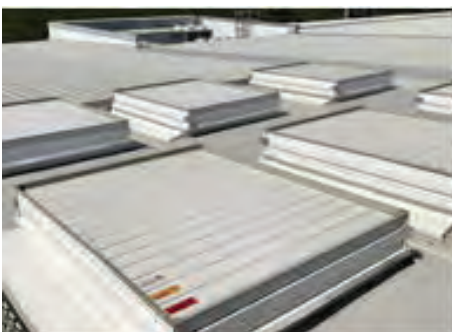


Typical brick up-stand installation detail



Aerodynamic Free Area - m<sup>2</sup>

Code	Without Wind Baffle								With Wind Baffle			
	A10	A12	A14	A15	B10	B12	B14	B15	A14	A15	B14	B15
<b>ORION</b>												
Standard ventilator	1.07	1.28	1.46	1.53	1.35	1.60	1.74	1.82	1.55	1.68	1.93	2.10
With burglar bar	1.02	1.23	1.40	1.47	1.29	1.53	1.67	1.75	1.48	1.61	1.85	2.01
With bird mesh	0.94	1.13	1.29	1.35	1.19	1.41	1.53	1.61	1.35	1.46	1.68	1.82
With burglar bar and bird mesh	0.91	1.08	1.24	1.30	1.14	1.36	1.48	1.54	1.29	1.40	1.61	1.75





**Head Office, Gauteng,  
Other provinces, Cross-border**

**Address:** Corner Barlow & Quality Roads, Isando  
**Sales:** chrise@rvi-group.com  
**Mobile:** 082 855 9776  
**Contracts:** pierrevdm@rvi-group.com  
**General Enquires:** info@rvi-group.com  
**Service & Maintenance:** servicedesk@rvi-group.com  
**Tel:** +27 (0)11 047 8280

**Northern Cape, Eastern Cape  
& Western Cape**

**Address:** Corner Borfors Circle & Goodenough Avenue, Epping, Industria 2, Cape Town  
**Sales:** kirsten.leach@rvi-group.com  
**Mobile:** 060 606 5917  
**Contracts:** markg@rvi-group.com  
**Mobile:** 082 301 4404  
**Service & Maintenance:** cptservicedesk@rvi-group.com  
**Tel:** +27 (0)21 521 1900  
**Fax:** +27 (0)21 556 6936

**Kwa-Zulu Natal**

**Address:** 11 Sucrose Crescent, Mount Edgecombe  
**Sales:** marks@rvi-group.com  
**Mobile:** 060 995 5337  
**Contracts:** gregorym@rvi-group.com  
**Mobile:** 066 475 0820  
**Service & Maintenance:** kznservicedesk@rvi-group.com  
**Tel:** +27 (0)31 538 0940  
**Fax:** +27 (0)31 579 5627



Version 1: 2018



CONSOLIDATED STEEL INDUSTRIES  
(PTY) LTD.

In compliance with Regulation (EU) No 305/2011 of the European Parliament and of the Council of 9 March 2011 (the Construction Products Regulation or CPR), this certificate applies to the construction products

## Natural smoke and heat exhaust ventilator

for fire safety use in natural smoke and heat exhaust systems, with specification and performance as specified on page 2-5 in this certificate.

### Product name: Orion

placed on the market under the name or trademark of

### Global Roofing Solutions

Corner Quality and Barlow str  
Isando, Kempton Park  
ZA-1600 Johannesburg, South Africa

and produced in the manufacturing plant  
same as above

This certificate attests that all provisions concerning the assessment and verification of constancy of performance described in annex ZA of the standard

### EN 12101-2:2003

under system 1 for the performance set out in this certificate are applied and that the factory production control conducted by the manufacturer is assessed to ensure the

### constancy of performance of the construction product.

This certificate was first issued on 2015-09-29 and will remain valid as long as neither the harmonised standard, the construction product, the AVCP methods nor the manufacturing conditions in the plant are modified significantly, unless suspended or withdrawn by the notified product certification body.

Issued by notified body 0402  
The validity of this certificate can be verified on our website.

Martin Tillander  
Director Product Certification

Certificate 0402-CPR-SC0331-15 | issue 4 | 2021-06-30

**RISE Research Institutes of Sweden AB | Certification**

Box 857, SE-50115 Borås, Sweden

+46 10 516 50 00 | [certifiering@ri.se](mailto:certifiering@ri.se) | [www.ri.se](http://www.ri.se)

151779

This document is the property of RISE and may not be reproduced other than in full, except with the prior written approval by RISE

## Specification

Dual purpose NSHEV, intended for comfort ventilation as well as smoke and heat exhaust ventilation under fire conditions. The opening of the NSHEV is type B. Louvre type NSHEV, comprising upstand, base, body and blades.

All parts manufactured from either "ISQ 300" 0,58 mm thick sheet steel, galvanized and/or pre-coated. And/or "AZ150" sheet steel, 0,55 mm thick body and 0,75 mm thick base, zincal and/or pre-coated.

The NSHEV could be equipped with or without a 150 mm high up-stand if roof mounted, it could also be equipped with or without burglar bar and/or bird mesh if roof or wall mounted. The NSHEV could be equipped with or without 50 mm high wind deflectors if roof mounted.

Length and width:	See table 1 for roof mounted See table 2 for wall mounted
Installation angle:	Flat roof up to 15° inclination, wall mounted
Opening angle louvre blades:	81°
Opening mechanism:	24V Linear actuator or 24V spring return actuator
Opening mechanism, supplier and type:	XuZhou Enhancer Window Control Co. Ltd., ENCO- L100-600-150 Belimo Automation AG, SF24A

## Performance

Aerodynamic free area:	See table 3 for roof mounted ventilator See table 4 for wall mounted ventilator
Reliability:	Re 100
Snow load:	SL 0
Low ambient temperature:	T(00)
Wind load:	WL 2 300
Resistance to heat:	B 300
Reaction to fire classification	
Steel:	A1

**Table 1, dimensions for roof mounted NSHEV**

Ventilator Code	Throat width (mm) 'A'	Throat length (mm) 'B'	Body width (mm) 'C'	Body length (mm) 'D'
A10	1 316	1 394	1 420	1 503
A12		1 660		1 769
A14		1 926		2 035
A15		2 059		2 168
B10	1 616	1 394	1 720	1 503
B12		1 660		1 769
B14		1 926		2 035
B15		2 059		2 168

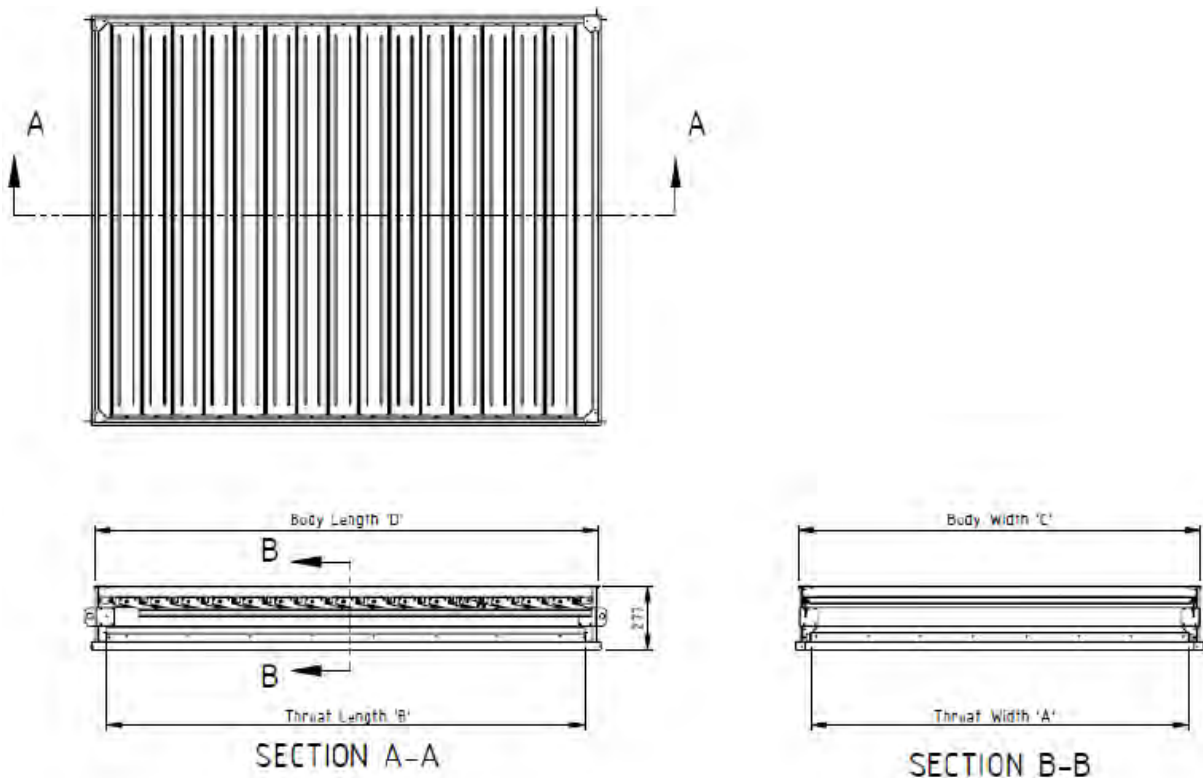
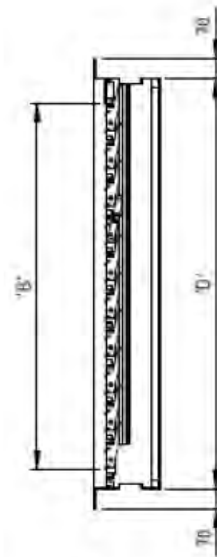
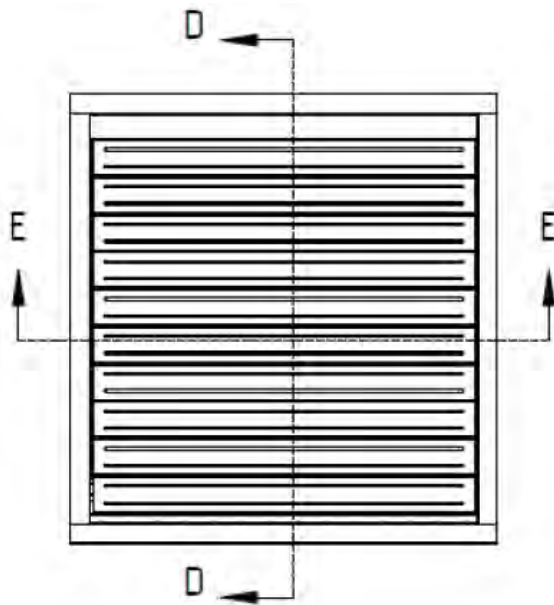
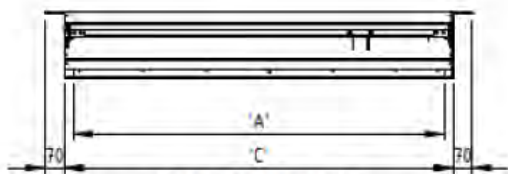


Table 2, dimensions for wall mounted NSHEV

Ventilator Code	Throat width (mm) 'A'	Throat length (mm) 'B'	Body width (mm) 'C'	Body length (mm) 'D'
A10	1 320	1 305	1 383	1 458
A12		1 571		1 724
A14		1 837		1 990
A15		1 970		2 123
B10	1 620	1 305	1 683	1 458
B12		1 571		1 724
B14		1 837		1 990
B15		1 970		2 123



SECTION D-D



SECTION E-E

**Table 3, C<sub>v</sub>-values for roof mounted NSHEV, tested with and without side wind**

Ventilator Code	C <sub>v</sub> -value, without wind deflectors, without upstand	C <sub>v</sub> -value, without wind deflectors, with upstand	C <sub>v</sub> -value, with wind deflectors, without upstand	C <sub>v</sub> -value, with wind deflectors, with upstand
A10	0,59	0,60	-	-
A12	0,59	0,60	-	-
A14	0,58	0,59	0,61	0,62
A15	0,57	0,58	0,62	0,63
B10	0,60	0,61	-	-
B12	0,60	0,61	-	-
B14	0,56	0,57	0,62	0,63
B15	0,55	0,56	0,63	0,64

In case of an installation of a burglar bar the above mentioned C<sub>v</sub>-values are to be reduced by 4%.  
In case of an installation of a bird mesh the above mentioned C<sub>v</sub>-values are to be reduced by 13%.

**Table 4, C<sub>v</sub>-values for wall mounted NSHEV, tested without side wind only i.e. for use in walls only**

Ventilator Code	C <sub>v</sub> -value, without wind deflectors, without upstand
A10	0,59
A12	0,59
A14	0,58
A15	0,57
B10	0,60
B12	0,60
B14	0,56
B15	0,55

In case of an installation of a burglar bar the above mentioned C<sub>v</sub>-values are to be reduced by 4%.  
In case of an installation of a bird mesh the above mentioned C<sub>v</sub>-values are to be reduced by 13%.

#### Calculation of aerodynamic free area

The aerodynamic free area is calculated according to the following formula:  $A_a = C_v \times A_v$

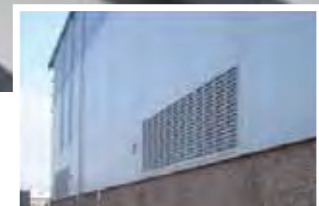
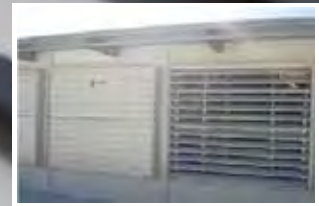
A<sub>a</sub> = aerodynamic free area

C<sub>v</sub> = coefficient of discharge

A<sub>v</sub> = geometric area of the ventilator (throat width x throat length)

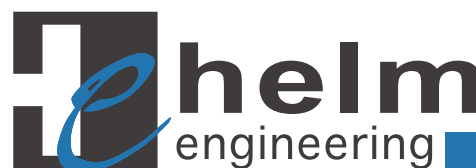
Helm Louvres

# Helm Fixed, Adjustable & Electromechanical Louvres



Visit: [www.helmengineering.co.za](http://www.helmengineering.co.za)  
Email: [marketing@helmeng.co.za](mailto:marketing@helmeng.co.za)  
Tel: 011 898 2900

Helm Louvres



# Helm Louvres

## Adjustable louvers

Order Code	Height m (a)	Total free inlet area Per s.q meter		Number of Blades	Mass kg	
		1000 m width (b)	1500 m width (b)		1000 m width	1500 m width
HLA 3	0.530	0.318	0.512	3	18.3	29.0
HLA 4	0.695	0.458	0.734	4	21.6	33.4
HLA 5	0.800	0.598	0.956	5	25.0	38.3
HLA 6	1.035	0.738	1.178	6	28.4	43.1
HLA 7	1.190	0.578	1.400	7	31.7	47.7
HLA 8	1.355	1.018	1.622	8	35.1	52.0
HLA 9	1.520	1.158	1.844	9	38.6	57.6
HLA 10	1.685	1.298	2.066	10	41.9	62.4
HLA 11	1.850	1.438	2.288	11	45.3	67.3
HLA 12	2.015	1.578	2.510	12	48.4	72.1
HLA 13	2.180	1.718	2.732	13	52.0	77.0
HLA 14	2.345	1.858	2.954	14	55.4	81.8
HLA 15	2.510	1.998	3.176	15	58.9	86.7
HLA 16	2.675	2.138	3.398	16	62.1	91.6
HLA 17	2.840	2.278	3.620	17	65.6	95.4
HLA 18	3.005	2.418	3.842	18	69.0	100.0

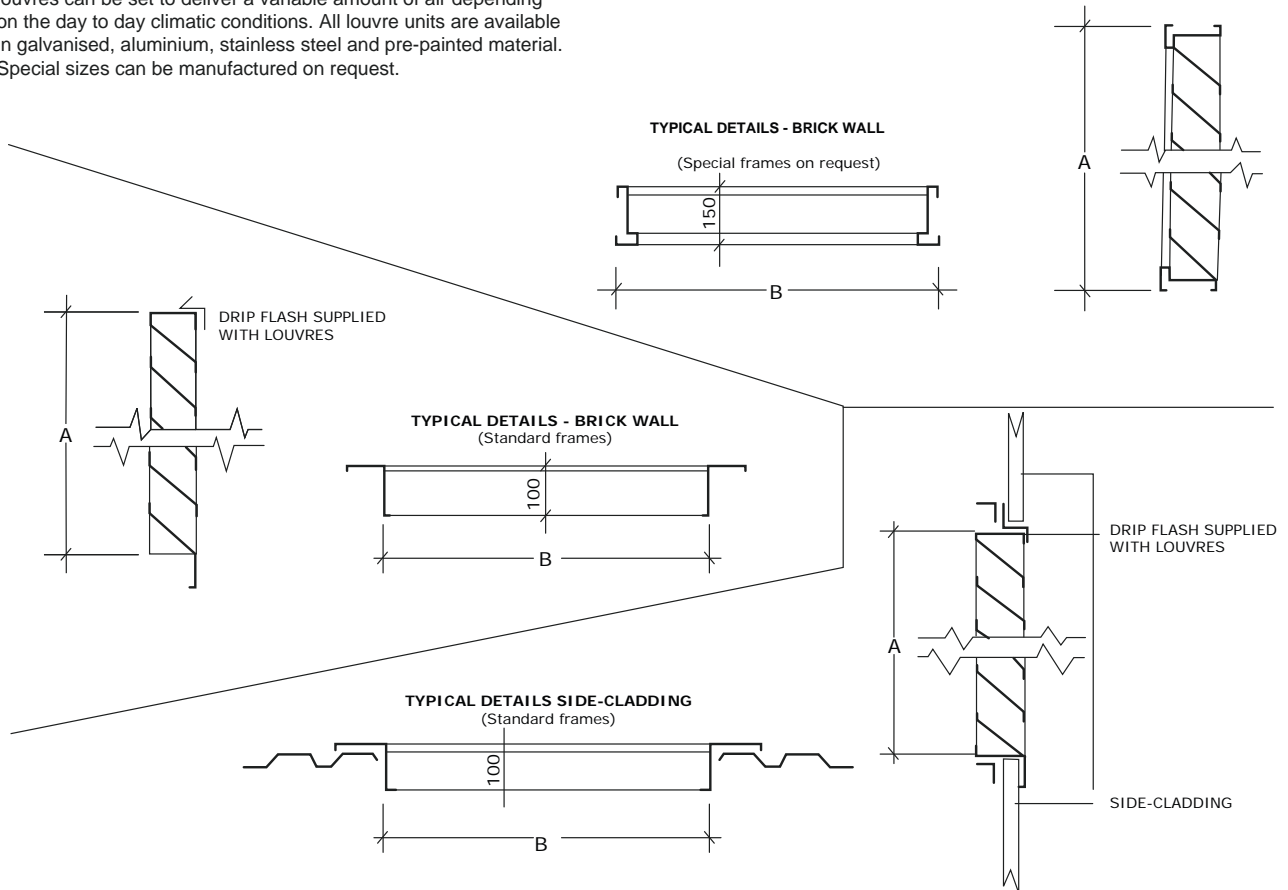
## Fixed louvres

Order Code	Height m (a)	Total free inlet area Per s.q meter		Number of Blades	Mass kg	
		1000 m width (b)	1500 m width (b)		1000 m width	1500 m width
HLF 4	0.595	0.278	0.429	4	14.4	21.2
HLF 5	0.735	0.416	0.638	5	16.6	24.4
HLF 6	0.875	0.544	0.843	6	18.8	27.6
HLF 7	1.015	0.692	1.050	7	21.0	30.9
HLF 8	1.155	0.830	1.257	8	23.2	34.1
HLF 9	1.295	0.968	1.464	9	25.4	37.3
HLF 10	1.435	1.106	1.671	10	27.6	40.5
HLF 11	1.575	1.244	1.878	11	29.8	43.7
HLF 12	1.715	1.382	2.085	12	32.0	46.9
HLF 13	1.855	1.520	2.292	13	34.2	50.1
HLF 14	1.995	1.658	2.499	14	36.4	53.3
HLF 15	2.135	1.795	2.706	15	38.6	56.5
HLF 16	2.275	1.934	2.913	16	40.8	59.7
HLF 17	2.415	2.072	3.120	17	43.0	62.9
HLF 18	2.555	2.210	3.327	18	45.2	66.1
HLF 19	2.695	2.348	3.534	19	47.4	69.3
HLF 20	2.835	2.486	3.741	20	49.6	72.6
HLF 21	2.975	2.624	3.948	21	51.8	75.8

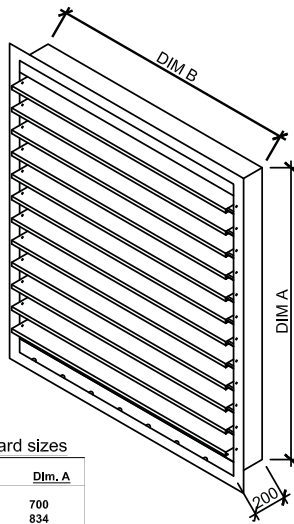
Helm louvres are designed to operate in conjunction with either Helm powered or natural ventilators, to replace hot stale air at desired areas.

Fixed louvres provide permanent ventilation, where as adjustable louvres can be set to deliver a variable amount of air depending on the day to day climatic conditions. All louvre units are available in galvanised, aluminium, stainless steel and pre-painted material. Special sizes can be manufactured on request.

**PLEASE NOTE:** Due to our ongoing research and development programme, we reserve the right to supply products which may differ slightly from those illustrated and described in this brochure.



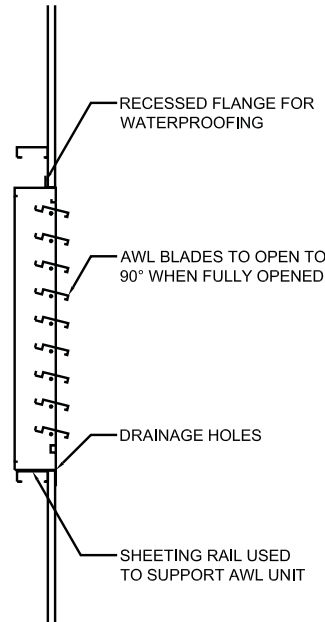
# Helm AWL (Automated Wall Louvre) DR-AWL-001



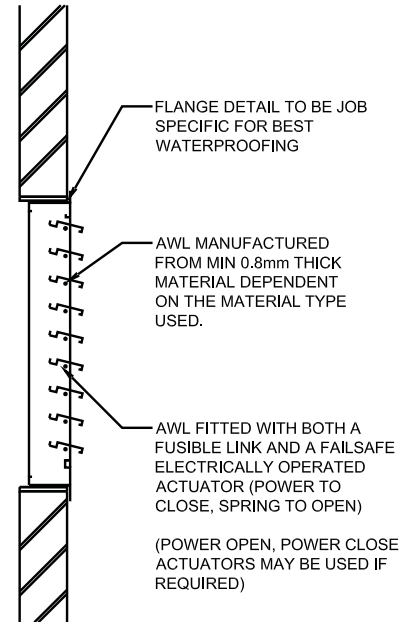
Standard sizes

Blades	Dim. A
4	700
5	834
6	968
7	1102
8	1236
9	1370
10	1504
11	1638
12	1772
13	1906
14	2040
15	2174
16	2308
17	2442

\*Dim. B Maximum 2000mm



AWL Sheeting Installation



AWL Wall Installation

## Function

Smoke Ventilation  
Natural Ventilation

## Specification Information

Helm AWL - Automated WALL LOUVRE complete with 90°C Fusible link as backup and a failsafe, power close, spring to open, actuator 24V or 230V. Material to be used.

## Areas most commonly used

Side Cladding / Brick Walls / Roof monitors

## Sizes

Height: 175mm. Throat Width up to 2000mm. Length: 700 - 2174mm in increments of 134mm. Different bases to accommodate installation requirements.

## Features

Fusible link, Interlocking blades, Large Rain Channels, Ventilation coefficient  $\pm 0.68$

## Optional extras

Burglar Bars/ Bird Proofing / Insect Proofing / Flanges & Flashings / Interconnecting Smoke Ducting

## Notes:

AWL available with the following material codes:  
Galvanized, Aluminium, Zinalume and Chromadek  
AWL can also be painted/ powder coated to specification.



# FIRELAB

## CERTIFICATE

This is to certify that

### Helm AWL Ventilator

Size:	1770 mm X 2650 mm
Material:	Steel
Fire activation:	93 °C Fusible link
Operating devices:	BELIMO® SF230A Spring return actuator Enhancer, Linear Drive Actuator. 230 V, 600 N, 150 mm

is classified as follows

Reliability:	Re 2 000
Wind Load:	WL 750
Resistance to Heat:	B <sub>300</sub> 30

when tested in accordance with

**BS EN 12101-2:2017**  
(Annexures C, F and G)

Signed:

Certificate Number: **FTC 19/326 (2)**

Report validity: **February 2025**

(For more details refer to Test Report number **FTC 19/326 (2)**)

Reg nr: 2005/087037/23 • Tel: + 2712 349 2929 • [info@firelab.co.za](mailto:info@firelab.co.za)

**CONSOLIDATED STEEL INDUSTRIES (PTY) LTD**  
CORNER OF QUALITY AND BARLOW ROADS, ISANDO, KEMPTON PARK, GAUTENG • +27 11 898 2900



# THERMAL RISING

- SMOKE EXTRACTION & VENTILATION SYSTEMS -

## Thermal Release Ventilators (TRV)

The Thermal Release Ventilator is a louvred ventilator designed to suit vertical & horizontal discharge of harmful smoke & heat from a building. The interlocking blades catch and direct water through internal rain channels, which then discharges the water onto the roof - making this a watertight product when installed correctly. The ventilator is equipped with an electromechanical motor and / or a backup fusible link device, which will open the spring loaded louvre blades in the event of a fire.

Model Type	TRV - 16	TRV - 18	TRV - Vertical
Body Dimensions (mm)	1600 W x 1600 L x 200 H	1600W x 1800 L x 200 H	Requirement Specific
Throat Dimensions (mm)	1500 W x 1600 L	1500 W x 1700 L	Requirement Specific
Geometric Throat Area (m <sup>2</sup> )	2.25	2.55	Requirement Specific
Aerodynamic Free Area (m <sup>2</sup> )	1.35	1.56	Requirement Specific
Purlin Space Suitable (mm)	1600	1800	Requirement Specific
Number of Blades	12	13	Requirement Specific
Max Velocity (m/s) - Fan Discharge	12	10	Requirement Specific



**Tested in accordance with EN12101-2:2017 by an independent test facility**



**Optional Extras: Dust Seals, Birdmesh, Electromechanical System, Backflashing & Waterproofing**



# FIRELAB

## CERTIFICATE

This is to certify that

Thermal Release Ventilator (TRV18)

Size:	1800 mm X 1600 mm
Material:	AZ150 Colouplus
Fire activation:	72 °C Fusible link
Functional ventilation:	Linear drive actuator

is classified as follows

Reliability:	Re 2700
Opening under Load:	SL 125
Wind Load:	WL 1500
Resistance to Heat:	B <sub>300</sub> 30

When tested in accordance with

**BS EN 12101-2:2017**

(Annexures C, D, F and G)

Signed:

Certificate Number: **FTC19/124**

Report validity: **August 2024**

(For more detailed information refer to report number **FTC 19/124**)

Reg nr: 2005/087037/23 • Tel: +2712 349 2929 • [info@firelab.co.za](mailto:info@firelab.co.za)

**THERMAL RISING (PTY) LTD.**  
47 MICRO PARK, 26 CRASSULA RD, CORNUBIA, DURBAN • +27 31 942 4942



Helm (H-MP)

# Helm Multi Purpose Ventilator Ventilators(H-MP)



Visit: [www.helmengineering.co.za](http://www.helmengineering.co.za)  
Email: [marketing@helmeng.co.za](mailto:marketing@helmeng.co.za)  
Tel: 011 898 2900

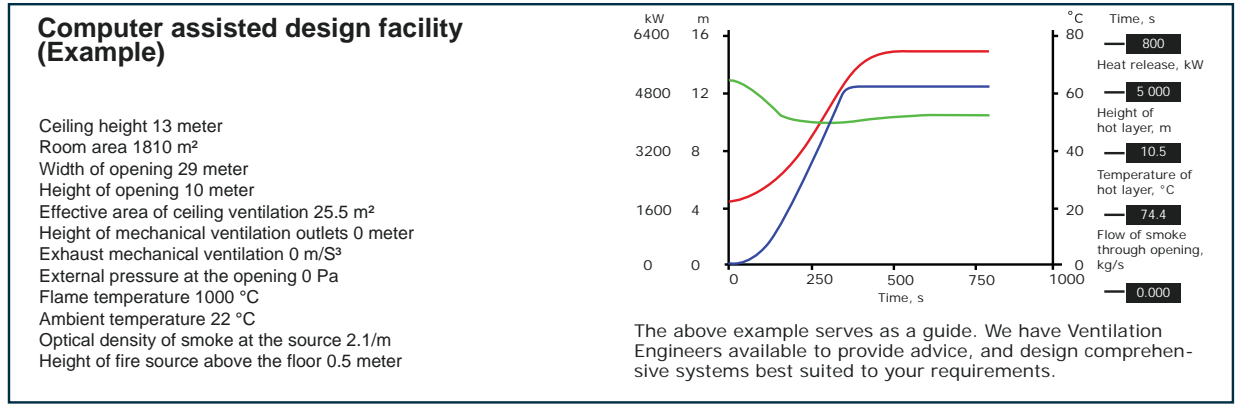
Helm (H-MP)



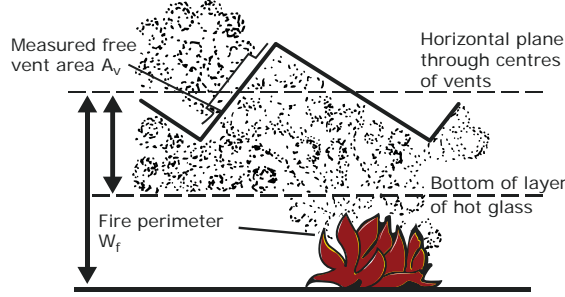
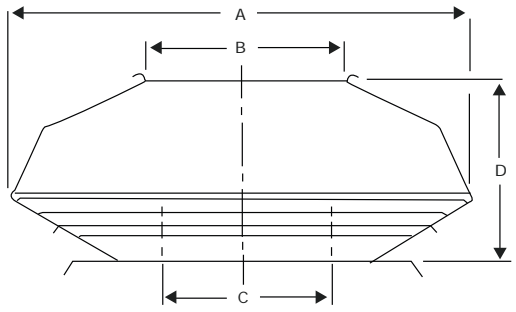
# Helm (H-MP)

## The firelight MKIII multi-purpose ventilator

To Expel Smoke and Fumes - Even Flames. The sensible way to keep your assets safe. With natural fresh air to increase productivity. Use our expertise to your benefit, so many others do



### Dimensions (mm)



### Section

Model	A	B	C	D	Throat Length	Mass kg Galv. Steel
FIRELIGHT MKIII	1520	685	600	610	2150	82

### Specification

- Ventilators will be of the Firelight MKIII (multi-purpose) type as manufactured by Helm Engineering.
- Ventilators will be the size shown on the drawings.
- As natural ventilators, the units will be weather tight under all normal positive pressure conditions, will be capable of withstanding a wind load of 1,5 kN/m<sup>2</sup> and will have a free area of exhaust at least equal to the throat opening.
- Provision will be made to permit manual operation from the roof for testing purposes without disturbing the release mechanism.

**PLEASE NOTE:** Bird proofing and burglar bars are optional extras.

Firelight MK III ventilators are backed by Helm's collective experience of more than 30 years of manufacturing and supply to the industry.

Helm accepts undivided responsibility for research, design and engineering, manufacture, delivery and erection of their complete product range.

**PLEASE NOTE:** Due to the introduction of our ongoing research and development program, we reserve the right to supply products which may differ slightly from those illustrated and described in this brochure.

**Ventilators can be constructed from either:**  
 Galvanised, Aluminium, Stainless steel and Pre-painted material. An embossed finish is also available on request.



Version 1: 2018



Helm (H-RV / H-SV)

# Helm Ridge / Slope mounted Ventilators(H-RV / H-SV)



Visit: [www.helmengineering.co.za](http://www.helmengineering.co.za)  
Email: [marketing@helmeng.co.za](mailto:marketing@helmeng.co.za)  
Tel: 011 898 2900

Helm (H-RV / H-SV)



# Helm (H-RV / H-SV)

## Standard Range

Model	A	B	C	D
H-SV / RV	460	360	900	960
H-SV / RV	600	470	1100	1150
H-SV / RV	750	585	1200	1250

## Dimensions (mm)

PLEASE NOTE: Units available in modules up to 2450 mm long. Larger throat openings available on request.

Helm Slope and Ridge Mounted Ventilators are backed by Helm's national experience, gathered over more than 30 years of manufacturing and supplying products to the industry.

As natural ventilators, the units will be weather tight under all normal positive pressure conditions, will be capable of withstanding a wind load of 1,5 Kn/m<sup>2</sup> and will have a free area of exhaust at least equal to the throat opening.

PLEASE NOTE: Bird proofing and burglar bars as well as electronic or pneumatic controls are available as optional extras.

Helm accepts undivided responsibility for research, design and engineering, manufacture, delivery and erection of their complete product range.

### Ventilators can be constructed from either:

Galvanised, aluminium, stainless steel and pre-painted material. An embossed finish is also available on request.

## Applications

The H-SV ventilator is commonly used throughout all types of industry and has many other applications in buildings such as schools, hospitals, hostels, etc. where efficient extraction is required without any noise on the slope of the roof.

The H-RV ventilator is commonly used throughout the industry and has many other applications in larger buildings such as warehouses, distribution centres etc. where efficient extraction is required along the ridge of the roof.

## Description

Helm Ridge / Slope Mounted Ventilators are natural extract roof mounted units. It ensures positive extraction under all weather conditions being so designed that all rain is effectively drained. It is suitable for the general ventilation of all industrial buildings.

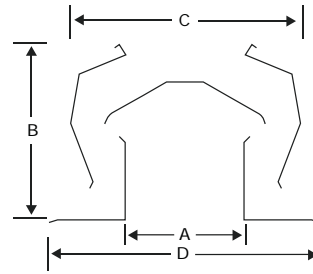
Since it operates without running costs it is particularly useful in industries where continuous extraction of plant and solar heat is needed.

### Performance tested

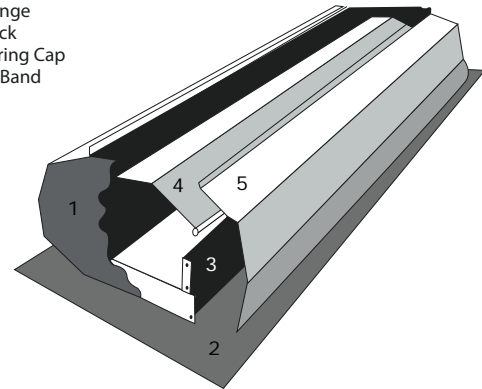
The Helm Ridge / Slope Mounted Ventilators has been fully tested by an Independent Test Authority. Coefficient of discharge = 0,4

PLEASE NOTE: Due to our ongoing research and development programme, we reserve the right to supply products which may differ slightly from those illustrated and described in this brochure.

## Standard Range



1. End Cap
2. Base Flange
3. Side Stack
4. Weathering Cap
5. Suction Band



## Installation

May be fixed into all types of roofing e.g. profiled sheet, concrete, either flat or pitched roofs. Detail drawings and/or fixing instructions are available on request.

## Abridged air change table

Situation	Air changes per hour *
Boiler Houses	20 - 30
Compressor Rooms	30 - 60
Engine Rooms	20 - 30
Factories (Workshops)	6 - 10
Furnace Shops	30 - 60
Garages	8 - 12
Kitchens (Commercial)	15 - 20
Laboratories	4 - 6
Machine Shops	6 - 10
Paint Shops	30 - 60
Poultry Houses	6 - 10
Warehouses	4 - 8

\*The air changes up to eight an hour provide for removing contamination normally caused by human occupants. The higher rates of air changes provide for removing heat and steam in temperate zones.

In hot climates the air changes per hour should at least be doubled.

Helm accepts undivided responsibility for research, design and engineering, manufacture, delivery and erection of their complete product range.



# SECO N 24 25

Stroke 250, 350mm



## Chain Actuator / 24V dc / 250N

The SECO N 24 25 is a certified and compliant Chain Actuator designed to provide precise and reliable operation for Environmental Ventilation applications.

SE Controls manufacture this high-quality 'Made in Britain' actuator with the following features:

- 'Frequency of operation' data logging records every actuator movement
- Compact design with variable options for stroke length
- Standard finish is Grey RAL 9006, can be customised to suit requirements
- Standard flex length is 2m but this can be modified to suit installation requirements
- Extensive range of brackets to suit a variety of window systems
- Quiet operation with configurable speed control

## Orientation



Bottom Hung



Top Hung



Side Hung



Centre Pivot

## Accreditations

Tested to BS EN ISO 16032:2004 for BB93 (2015).



## Applications



Environmental Ventilation

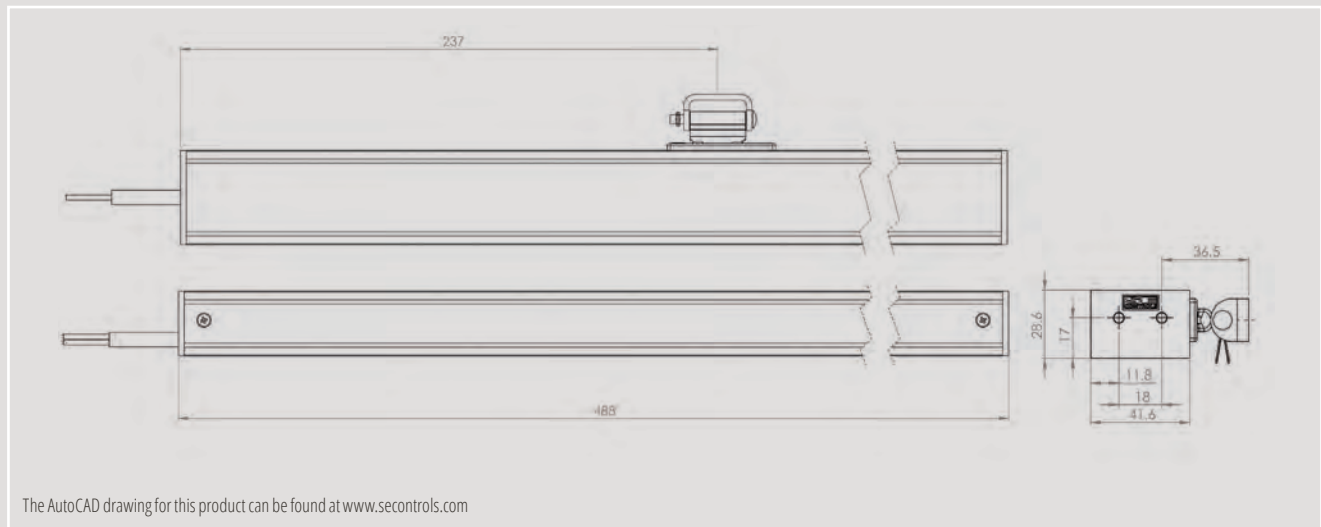
## Controllers

Controller	No. Actuators*
3 AMP Transformer	6
NVLogiQ PSU	8
SHEVTEC Controller	16
30 AMP PSU	60
OS2 AC Controller	N/A

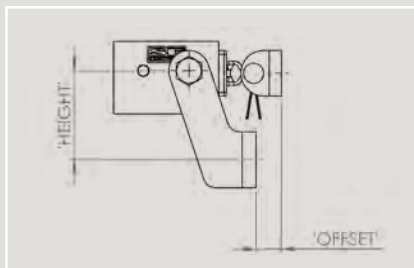
\*Recommended maximum no. of actuators

NB: 24V actuators require control from a compatible low voltage unit such as an OS2 SHEVTEC controller or NVLogiQ® PSU and permanent power should not be applied.

## Technical Drawing



## Standard Bracket Detail



## Bracket Product Codes

	Height (mm)		
Offset (mm)	35	40	50
0	AKS18000001	AKS18000002	AKS18000003
5	AKS18050001	AKS18050002	AKS18050003
8	AKS18080001	AKS18080002	AKS18080003
10	AKS18100001	AKS18100002	AKS18100003
15	AKS18150001	AKS18150002	AKS18150003
20	N/A	N/A	AKS18200003



Please ensure the controllers have a minimum 1 second delay between switching if they are not SE Controls products.

## Technical Data

<b>Actuator</b>	SECO N 24 25
<b>Actuator Type</b>	24V dc Chain Opener
<b>Voltage (all +/-5%)</b>	24V dc
<b>Current Draw (Amp)</b>	0.5A
<b>Stroke</b>	250mm, 350mm (configurable)
<b>Operating Speed</b>	5mm/sec (configurable) 3mm/sec (option single application only)
<b>Ambient Operating Temp</b>	-5°C to +60°C
<b>Thrust Force</b>	250N
<b>Close Force</b>	250N
<b>Soft Close</b>	Yes
<b>Switching</b>	Electronic
<b>Standard Finish</b>	Powder coated Grey (RAL 9006)
<b>Seal Relief</b>	Programmable up to 20mm
<b>Clamping Force</b>	4000N
<b>Colour Option</b>	Other RAL colours available on request
<b>Flex Length</b>	2m
<b>Flex Type</b>	2 core PVC 4 core (volt free contact) as option
<b>Flex Colour</b>	Grey
<b>Product Warranty</b>	15,000 cycles
<b>Duty Cycle</b>	22% (approx. 2 mins on, 7 mins off)
<b>IP Rating</b>	IP20
<b>Bracket</b>	Sill fixing/ face fix/ thru body sill
<b>Synchronisation</b>	Optional
<b>Application</b>	Environmental Ventilation

## Product Codes

Silver Grey (RAL 9006)	Operating Voltage	Force	Stroke
AAS0250250S	24V	250N	250mm
AAS0250350S	24V	250N	350mm

# Standard Manual Control Point (MCP)

Standard Manual Control Point (MCP)



## Application



### Features:

The MCP is designed to allow the Fire & Rescue Service to manually override the smoke control system through a user friendly interface. Design includes an open button and a close/reset button, which are accessed by lifting the clear front door.

The MCP fully complies to prEN12101 part 9.

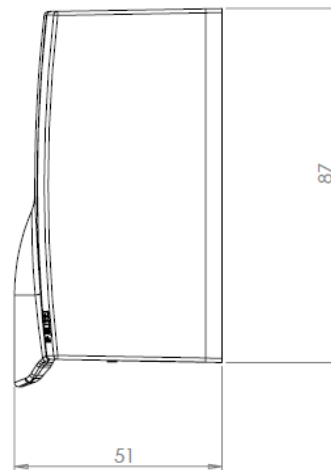
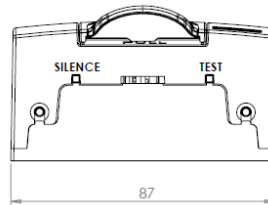
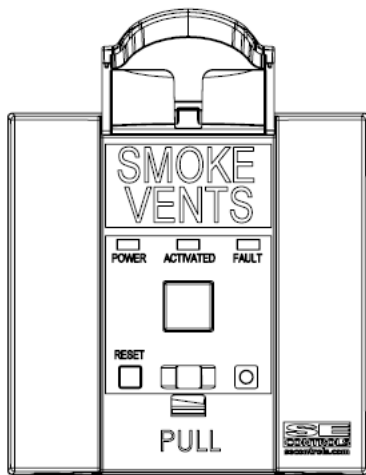
System status, operation, fault finding and cable monitoring is all included within the features of the MCP as required by the standard.



SEC\_4114 09/13

# Standard Manual Control Point (MCP)

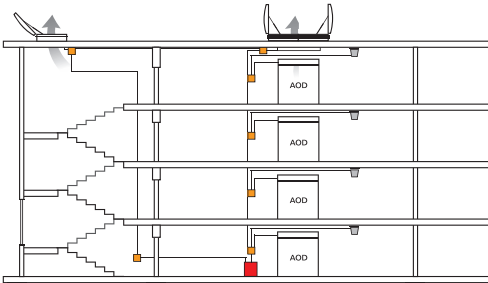
## Technical Drawing



The AutoCAD drawing for this product can be found at [www.secontrols.com](http://www.secontrols.com)

## Technical Data

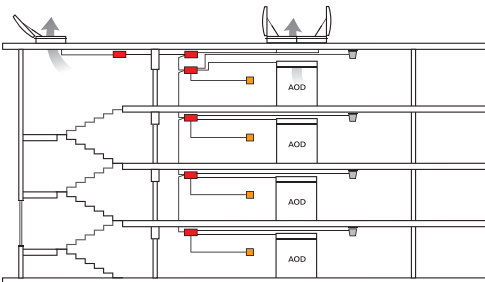
### OSLoop Control System



#### Key

- OSLoop Coordinator
- Optical Smoke Detector
- Manual Control Point

### OS2 Control System



#### Key

- OS2 Control Panel
- Optical Smoke Detector
- Manual Control Point

Device details	Tested prEN12101-9
	provided in orange (RAL 2011) as required as part of prEN12010-9
	The device has the capabilities of providing audible signals and faults along with having a silence button out of view
	The device continuously monitors actuators and connections to smoke detectors (As required as part of prEN12010-2)
	Event logging to provide historical user information
	Maintenance indication (Statutory requirement of the Regulatory Reform Order (Fire Safety))
	Cover reset push button via access key fob
	Reset push button
	Activated LED
	Power/Healthy LED
Fault LED	
Single action activation cover (replaces glass frangible element)	
For use with 24V OSLoop and OS2 control panels.	87 x 87 x 22mm (h x w x d) - Flush mount
	87 x 87 x 54mm (h x w x d) - Surface mount

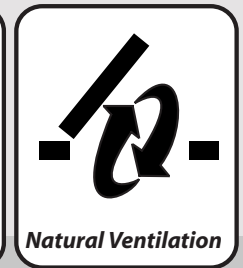
### MCP part numbers

<b>OSLoop MCP part number</b>	MCP Module	FCS 003 00017
	Adapter Plate	FCS 003 00018
<b>OS2 MCP part numbers</b>	MCP Module	FCS 002 00016
	Adapter Plate	FCS 002 00017
	Dumb Reset Key	FCS 002 00024
	Surface Mount Box	FYS 150 40061
	MCP Finger Plate	FCS 002 00055

**CE CERTIFIED**  
**Compliant to applicable regulations**

SEC\_4114 09/13

# OS2 SHEVTEC Controller



## **OS2 SHEVTEC Controller**

The OS2 SHEVTEC Controller is an intelligent 24 Volt dc control system designed to drive 2-wire 24V dc actuators in a smoke control and/or natural ventilation system.

Operating from a 230V ac 5.0A supply, the OS2 SHEVTEC Controller can deliver up to 8A to drive 24 volt motorised actuators and magnetic catches. Battery backup is provided for continued operation after a mains supply failure.

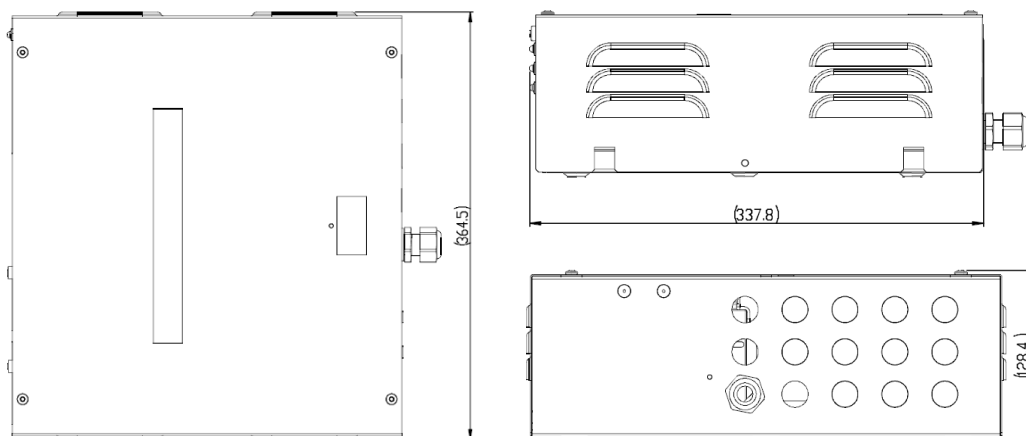
The controller can be mounted locally to the devices to be operated or in a centralised plant room location. Each SHEVTEC Controller can be operate independently or can be linked to others to produce a networked control system. The networked control system in turn can operate standalone or be linked to a building management system.

**CE CERTIFIED**  
**EN12101-10 CERTIFIED**

*Compliant to applicable regulations.*

# OS2 SHEVTEC Controller

## Technical Drawing



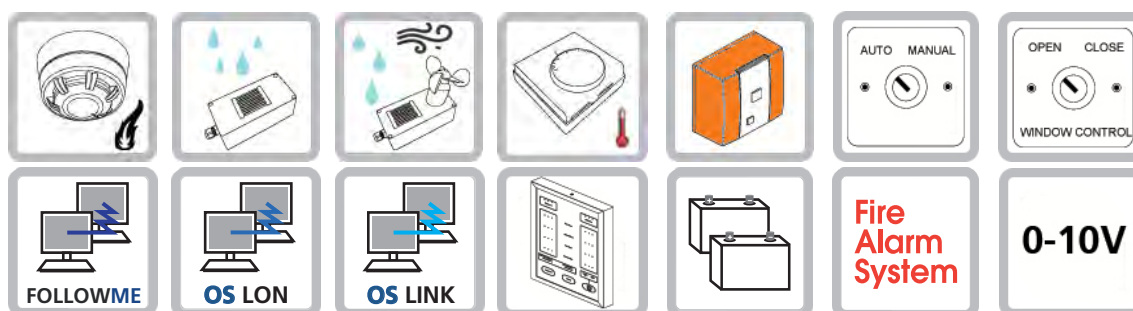
ALL MEASUREMENTS  
IN mm

24V dc

The AutoCAD drawing for this product can be found at [www.secontrols.com](http://www.secontrols.com)

## Technical Data

## Connections



### Power

- Supply 230V ac 50/60 Hz from a 5A fused unswitched spur
- Output nominal 24V dc 2-Channels Combined output not to exceed 8A
- Backup Battery 2x12V dc 7.0Ah Sealed Lead-Acid Batteries
- Battery standby time 72 hours with maximum 40mA standby drain on PER permanent\*

### Environment

- IP Rating 30
- Humidity Range 10 to 90% Non-Condensing
- Storage -20 to +50 °C
- Operating temperature for Control Panel (not including batteries) -5 to +40 °C\*\*

### Miscellaneous

- Dimensions 356 x 332 x 125mm (casement) 364.5 x 337.8 x 128.4mm (including housing fixings)
- Mass Approx 13kg
- Cable entry is via 15 x 20mm end mounted cable glands and/or one rear entry slot for concealed connection
- Internal temperature sensor installed to provide optimal battery charging compensation as the ambient temperature changes.

OS2 SHEVTEC CONTROLLER Part Number: **FCS 122 50000**

\*Standby drain current comprises of enabled fire inputs, communication cards, and other loads connected to PER.

\*\*Operation at elevated temperatures may reduce battery life

# Twin SECO Ni 24 40

Stroke 600, 900mm



## Chain Actuator / 24V dc / 2 x 400N

The Twin SECO Ni 24 40 is a certified and compliant Chain Actuator designed to provide precise and reliable operation for Smoke and Environmental Ventilation applications.

SE Controls manufacture this high-quality 'Made in Britain' actuator with the following features:

- Tested with specific system profiles to all annexes of smoke vent standard EN12101-2:2003 (contact SE Controls to ensure it is tested with your profile, and the correct manufacturing process is followed)
- 'Frequency of operation' data logging records every actuator movement
- Compact design with variable options for stroke length
- Standard finish is Grey RAL 9006, can be customised to suit requirements
- Standard flex length is 2m but this can be modified to suit installation requirements
- Extensive range of brackets to suit a variety of window systems
- Quiet operation with configurable speed control
- 900mm version is not suitable for Top Hung applications

## Orientation



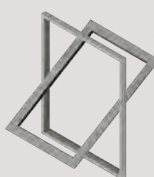
Bottom Hung



Top Hung



Side Hung



Centre Pivot

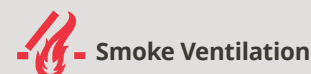
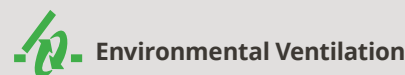
NB: 24V actuators require control from a compatible low voltage unit such as an OS2 SHEVTEC controller or NVLogIQ® PSU and permanent power should not be applied.

## Accreditations

Certified and tested with specific profiles to all annexes of EN12101-2:2003.



## Applications

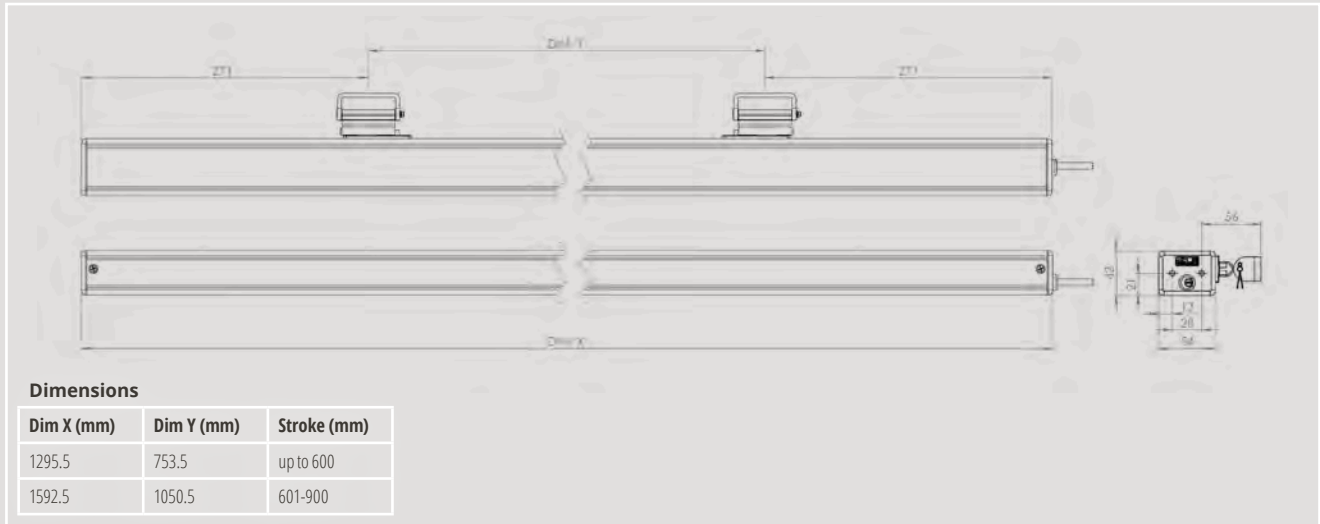


## Associated Controls

Stroke	600mm	900mm
Controller	No. Actuators*	No. Actuators*
3 AMP Transformer	1	1
NVLogIQ PSU	2	2
SHEVTEC Controller	4	3
30 AMP PSU	15	12
OS2 AC Controller	N/A	N/A

\*Recommended maximum no. of actuators

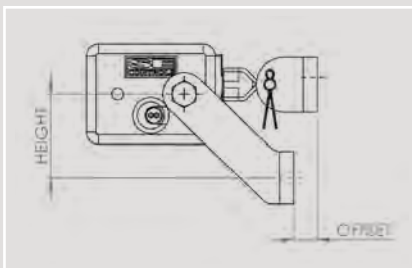
## Technical Drawing



### Dimensions

Dim X (mm)	Dim Y (mm)	Stroke (mm)
1295.5	753.5	up to 600
1592.5	1050.5	601-900

## Standard Bracket Detail



## Bracket Product Codes

Offset (mm)	Height (mm)		
	35	40	50
0	AKS16000001	AKS16000002	AKS16000003
5	AKS16050001	AKS16050002	AKS16050003
8	AKS16080001	AKS16080002	AKS16080003
10	AKS16100001	AKS16100002	AKS16100003
15	AKS16150001	AKS16150002	AKS16150003
20	N/A	N/A	AKS16200003



Please ensure the controllers have a minimum 1 second delay between switching AND a Permissible Ripple Voltage of 1V<sub>SS</sub> if they are not SE Controls products.

## Technical Data

<b>Actuator</b>	Twin SECO Ni 24 40
<b>Actuator Type</b>	24V dc Chain Opener
<b>Voltage (all +/-5%)</b>	24V dc
<b>Current Draw (Amp)</b>	0-600mm= 2.0A 601-900mm= 2.4A
<b>Stroke</b>	0-600mm (configurable) 601-900mm (configurable)*
<b>Operating Speed</b>	15mm/sec min. 8mm/sec (configurable)
<b>Ambient Operating Temp</b>	-5°C to +60°C
<b>Thrust Force</b>	2 x 400N
<b>Close Force</b>	2 x 400N
<b>Soft Close</b>	Yes
<b>Switching</b>	Electronic
<b>Standard Finish</b>	Powder coated Grey (RAL 9006)
<b>Seal Relief</b>	Programmable up to 20mm
<b>Clamping Force</b>	4000N
<b>Colour Option</b>	Other RAL colours available on request
<b>Flex Length</b>	2m
<b>Flex Type</b>	2 core / 0.75mm silicone 4 core (volt free contact) as option
<b>Flex Colour</b>	Grey
<b>Product Warranty</b>	15,000 cycles
<b>Duty Cycle</b>	22% (approx. 2 mins on, 7 mins off)
<b>IP Rating</b>	IP20 or IP42 (see Product Codes below for details)
<b>Bracket</b>	Sill fixing/ open inward/ face fix bracket
<b>Synchronisation</b>	Optional
<b>Application</b>	Smoke and Environmental Ventilation

## Product Codes

Silver Grey (RAL 9006)	Operating Voltage	Force	Stroke	IP Rating
AAST1406005	24V	2 x 400N	600mm	IP20
AAST1409005	24V	2 x 400N	900mm	IP20
AAST1406001	24V	2 x 400N	600mm	IP42
AAST1409001	24V	2 x 400N	900mm	IP42

\*900mm version is not suitable for Top Hung applications.

+44 (0)1543 443060  
sales@secontrols.com  
www.secontrols.com

# Wall-mounted Switch and Wireless Receiver Module - NV/RF



## Description

The product uses main AC power supply and provides a 24VDC output. It is a perfect combination of regular switch and RF receiver which makes it ideal for building automation and smart home appliances.

## Features

- Wide range AC supply with DC 24V output
- Surge-resistant relay
- SMT with moisture-proof finish
- LED indicator for easy configuration

## Technical Data - Specification

### NV/RF Control Module

Product Code: NV.R.A3.86.86

Frequency: RF433.92Mhz

Dimensions: 86mm x 86mm, house in normal BS single gang box

Output Current: 2A@24Vdc (230Vac input), max 3A for 60 seconds

### NV/RF Portable Control

Product Code: NV.B.21.00.01

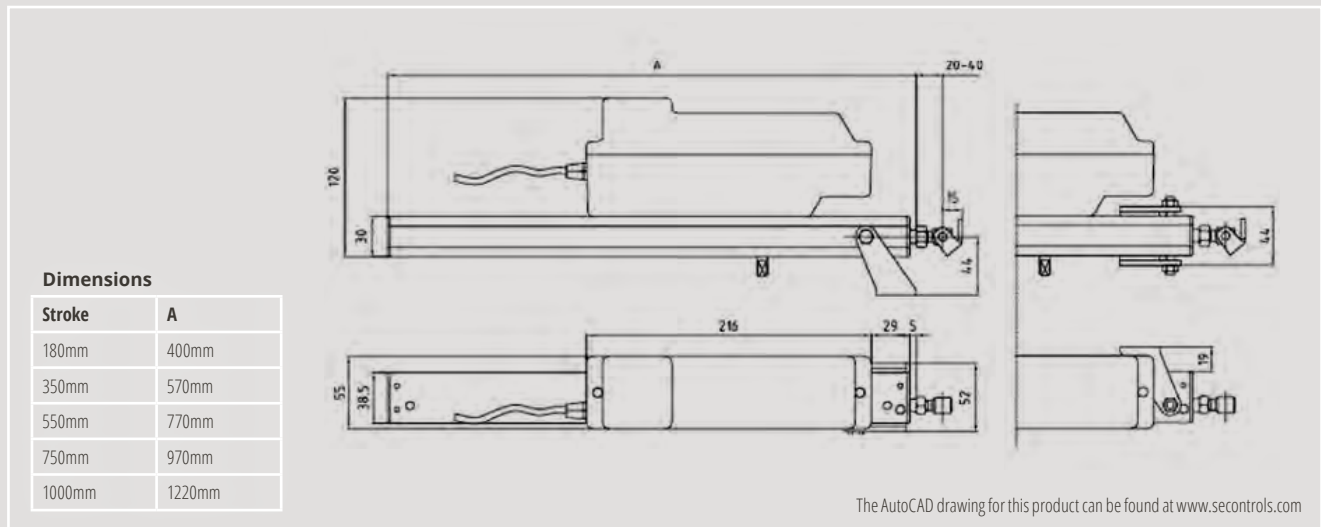
Frequency: RF433.92Mhz

Type: Handheld unit

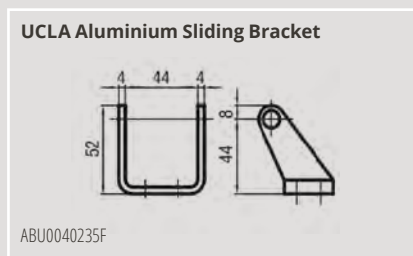
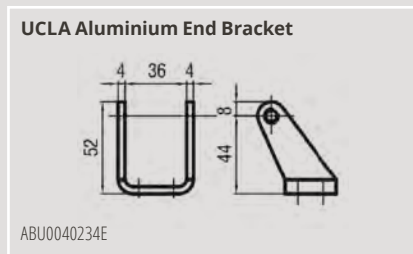
Dimensions: 125mm x 45mm

Effective transmit distance: 100m (open space)

## Technical Drawing



## Brackets



## Technical Data

<b>Actuator</b>	SELA U 24 75
<b>Type</b>	24V dc Rack & Pinion Linear
<b>Voltage (all +/-6%)</b>	24V dc
<b>Current Draw (Amp)</b>	1A
<b>Stroke</b>	180/350/550/750/1000mm
<b>Operating Speed</b>	8mm/s
<b>Ambient Operating Temp</b>	-10°C + 40°C
<b>Thrust Force</b>	750N
<b>Close Force</b>	650N
<b>Switching</b>	Electronic Limit
<b>Standard Finish</b>	Silver Anodised
<b>IP Rating</b>	IP55
<b>Product Warranty</b>	10,000 Strokes
<b>Application</b>	Environmental and Smoke Ventilation

## Product Codes

Silver Anodised	Stroke
AAU07500180	180mm
AAU07500350	350mm
AAU07500550	550mm
AAU07500750	750mm
AAU07501000	1000mm

# SELA U 24 75

Stroke 180 / 350 / 550 / 750 / 1000mm

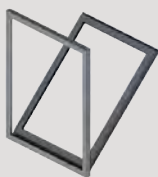


## Linear Drive Actuator / 24V dc / 750N

Cost effective and strong rack and motor drive mainly used for sloping smoke vent and rooflight applications.

Two push points from a single motor can be provided via a connecting rod and secondary rack.

### Orientation



Bottom Hung



Top Hung



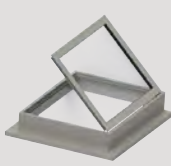
Side Hung



Sloping Roof Vent



Centre Pivot



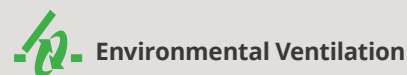
Roof Vent

### Accreditations

Certified & tested in accordance with EN12101-2.



### Applications



Environmental Ventilation



Smoke Ventilation

NB: 24V actuators require control from a compatible low voltage unit such as an OS2 SHEVTEC controller or NVLogiQ® PSU and permanent power should not be applied.



Please ensure the controls have a delay between switching if you are not using SE Controls products.

## Product Specification Sheet

SC2

## Fixed Smoke Curtain Approval to European Standards

### OVERVIEW

SC2 Fixed Smoke Curtains can be manufatcutred to suit any shape or size application. Used extensively in aircraft hangars and warehouses where the barrier is able to stay permanently in position.

- Rated at 600°C for 120 minutes to BSEN12101-1
- Approved for unlimited widths and up to 10m drop
- Warrington Fire - Certifire Certificate of Approval (CF 5030)
- European Certificate of Constancy of Performance - CE Mark



### STANDARDS

Tested and approved to European Standards.

- EN 12101 - Smoke and Heat Control Systems - Part 1 : Specification for Smoke Barriers.

### WARRANTY

A manufacturer's warranty is provided for a period of one year. Exclusions may apply if any element is sublet to an unauthorised party.



BLE Smoke & Fire Curtains,  
Unit 3 Holbrook Commerce Park, Holbrook Rise,  
Sheffield, England, S20 3FJ

Call: 0114 251 4703  
Email: enquiries@blecurtains.com  
Visit: www.ble-smokeandfirecurtains.com

## Product Specification Sheet

SC1

## Smoke Curtain Approval to European Standards

### KEY SPECIFICATIONS

Headbox	1.2mm galvanized mild steel with 2mm end caps
Rollers	76mm coated mild steel tube
Motors	24V DC, 3100 RPM
Fabric	X32K
Bottom Bar	20mm x 20mm - 20mm x 40mm galvanised steel
Side Guides	Optional extra (please specify)
Electronics	See separate spec sheet



### STANDARDS

Tested and approved to European Standards.

- EN 12101 - Smoke and Heat Control Systems - Part 1 : Specification for Smoke Barriers.

### DESIGNATIONS & SIZE LIMITATIONS

Model	Max Width (m)	Max Drop (m)	Classification	Product Standard	Certificate / Reports
Single Roller	Unlimited	10.0	D120 / DH60	BSEN 12101-1	Certifire CF5030

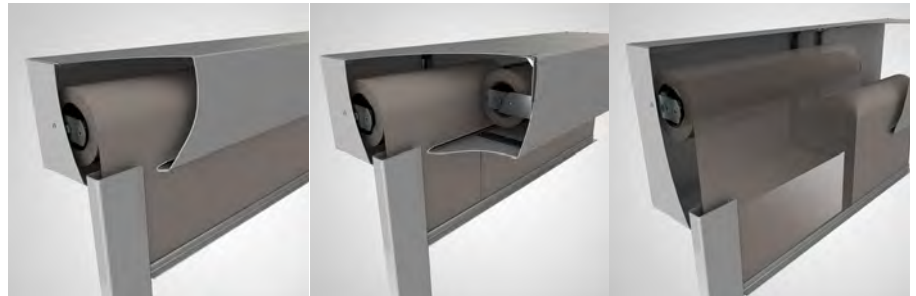
## HEADBOX SIZES

The size of the curtain roller housing (headbox), depends on the curtain drop and width. The tables below give details of the full range of standard headbox sizes for the SC1 smoke curtains. Contact us for oversized systems.

Type A: The standard headbox for use with curtain widths up to 5m.

Type B: Headbox for use with limited installation height for headbox.

Type C: The standard headbox for use with curtain unlimited widths.



	Type A		Type B		Type C	
	Single Roller Headbox (Max Width 5m)		Side by Side Headbox (Up to 45m)		Over Under Headbox (Up to 45m)	
	Roller Width		Roller Width		Roller Width	
Curtain Drop	Up to 2.5m	Up to 5.0m	Up to 2.5m	Up to 5.0m	Up to 2.5m	Up to 5.0m
Up to 1.5m	150x125mm	150x150mm	250x125mm	250x150mm	150x250mm	150x250mm
1.501m - 3.0m	150x150mm	180x180mm	250x150mm	310x180mm	150x250mm	180x310mm
3.001m - 6.0m	180x180mm	210x210mm	310x180mm	350x210mm	180x310mm	210x350mm
6.001m - 10.0m	210x210mm	230x230mm	350x210mm	390x230mm	210x350mm	230x390mm

## WARRANTY

A manufacturer's warranty is provided for a period of one year. Exclusions may apply if any element is sublet to an unauthorised party.



BLE Smoke & Fire Curtains,  
Unit 3 Holbrook Commerce Park, Holbrook Rise,  
Sheffield, England, S20 3FJ

Call: 0114 251 4703  
Email: enquiries@blecurtains.com  
Visit: www.ble-smokeandfirecurtains.com

## Product Specification Sheet

FC1

Fire Curtain with up to 1-hour Fire Resistance  
Approval to British and European Standards

### KEY SPECIFICATIONS

Headbox	1.2mm galvanized mild steel with 2mm end caps
Rollers	76mm coated mild steel tube
Motors	24V DC, 3100 RPM
Fabric	X32K
Bottom Bar	20mm x 20mm - 20mm x 40mm mild steel
Side Guides	100 x 50 rolled steel
Electronics	See separate spec sheet



### STANDARDS

Tested and approved to British and European Standards.

- BS EN 1634 - Part 1 : Fire resistance test for door and shutter assemblies and openable windows.

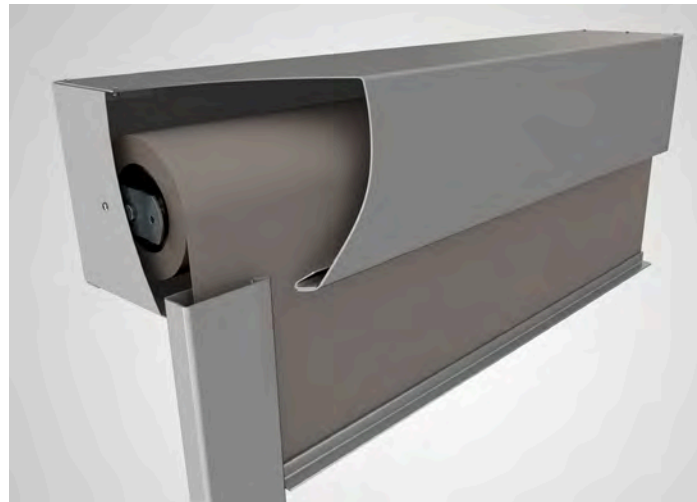
### DESIGNATIONS & SIZE LIMITATIONS

Model	Max Width (m)	Max Drop (m)	Fire Resistance (mins)		Product Standard	Certificate / Reports
			Integrity (E)	Irradiance (W)		
Single Roller	3.0	2.85	60	-	BSEN 1632	Certifire CF5432
	2.8	2.3	60	30		
	1.4	2.3	60	60		

## HEADBOX SIZES

The size of the curtain roller housing (headbox), depends on the curtain drop and width. The tables below give details of the full range of standard headbox sizes for the FC1 fire curtains.

The Type A Headbox shown below is the standard headbox for use with FC1 curtains.



Type A

Single Roller Headbox  
(Max Width 5m)

Roller Width

Curtain Drop	Roller Width	
	Up to 2.5m	Up to 5.0m
Up to 1.5m	150x125mm	150x150mm
1.501m - 3.0m	150x150mm	180x180mm

## WARRANTY

A manufacturer's warranty is provided for a period of one year. Exclusions may apply if any element is sublet to an unauthorised party.



## Product Specification Sheet

FC2

Fire Curtain with up to 4-hour Fire Resistance  
Approval to British and European Standards

### KEY SPECIFICATIONS

Headbox	1.2mm galvanized mild steel with 2mm end caps
Rollers	76mm coated mild steel tube
Motors	24V DC, 3100 RPM
Fabric	C41000WK
Bottom Bar	20mm x 20mm - 20mm x 40mm mild steel
Side Guides	100 x 50 rolled steel
Electronics	See separate spec sheet



### STANDARDS

Tested and approved to British and European Standards.

- BS EN 1634 - Part 1 : Fire resistance test for door and shutter assemblies and openable windows.

### DESIGNATIONS & SIZE LIMITATIONS

Model	Max Width (m)	Max Drop (m)	Fire Resistance (mins)		Smoke Seal Option Available	Product Standard	Certificate / Reports
			Integrity (E)	Irradiance (W)			
Single Roller	7.0	8.0	60	30	Yes	BSEN 1634-1	Certifire CF5433
		7.0	120	30			
		6.0	180	30			
		5.0	240	30			
	2.4	2.7	240	60			
Multiple Roller	Unlimited	6.0	240	-	No	-	

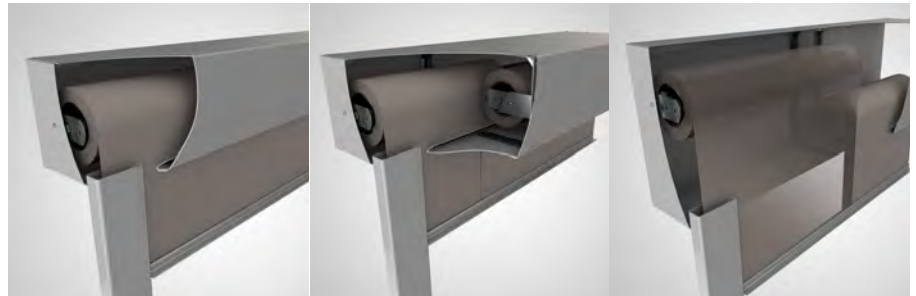
## HEADBOX SIZES

The size of the curtain roller housing (headbox), depends on the curtain drop and width. The tables below give details of the full range of standard headbox sizes for the FC2 fire curtains. Contact us for oversized systems.

Type A: The standard headbox for use with curtain widths up to 5m.

Type B: Headbox for use with limited installation height for headbox.

Type C: The standard headbox for use with curtain unlimited widths.



FC2	Type A		Type B		Type C		
	Single Roller Headbox (Max Width 5m)		Side by Side Headbox (Up to 45m)		Over Under Headbox (Up to 45m)		
	Roller Width		Roller Width		Roller Width		
	Curtain Drop	Up to 2.5m	Up to 5.0m	Up to 2.5m	Up to 5.0m	Up to 2.5m	Up to 5.0m
	Up to 1.5m	150x125mm	150x150mm	250x125mm	250x150mm	150x250mm	
	1.501m - 3.0m	150x150mm	180x180mm	230x180mm	310x180mm	180x310mm	
	3.001m - 6.0m	180x180mm	210x210mm	310x180mm	350x210mm	210x350mm	
	6.001m - 8.0m	210x210mm	230x230mm	-		-	

## WARRANTY

A manufacturer's warranty is provided for a period of one year. Exclusions may apply if any element is sublet to an unauthorised party.



BLE Smoke & Fire Curtains,  
Unit 3 Holbrook Commerce Park, Holbrook Rise,  
Sheffield, England, S20 3FJ

Call: 0114 251 4703  
Email: enquiries@blecurtains.com  
Visit: www.ble-smokeandfirecurtains.com